

Name: \_\_\_\_\_

Date: \_\_\_\_\_

Class: \_\_\_\_\_

**1. Where can you see latitude and longitude lines?**

- a. From the air
- b. On a map or globe
- c. Around fault lines
- d. On the bottom of the ocean

**2. What is the climate like at 0 degrees latitude?**

- a. Hot and tropical
- b. Temperate
- c. Frigid
- d. Hot in summer, cold in winter

**3. The lines of latitude and longitude form an imaginary \_\_\_\_\_ over the planet.**

- a. Box
- b. Diagonal
- c. Pattern
- d. Grid

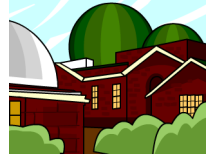
**4. How many degrees of latitude are there between the North and South Poles?**

- a. 90
- b. 100
- c. 180
- d. 360

**5. What is the 0-degree latitude line called?**

- a. Latitude-zero
- b. 180 degrees longitude
- c. The equator
- d. The prime meridian

6.

**What is the significance of Greenwich, England?**

- a. It's where 0 latitude and 0 longitude cross
- b. The Prime Meridian runs through it
- c. It's where the Tropic of Cancer meets the Tropic of Capricorn
- d. The equator runs through it

**7. Between every two degrees of longitude there are sixty:**

- a. Seconds
- b. Minutes
- c. Latitudes
- d. Meridians

**8. Between every two minutes of longitude there are sixty:**

- a. Microminutes
- b. Additional minutes
- c. Microlongitudes
- d. Seconds

**9. How many degrees of longitude are there to the east and west of the Prime Meridian?**

- a. 90
- b. 100
- c. 180
- d. 520

**10. What is the climate like at 90 degrees south latitude?**

- a. Frigid
- b. Tropical
- c. Temperate
- d. Hot in summer, cold in winter